

<b>County</b>	Dorchester
<b>Municipality</b>	Unincorporated
<b>Zoning</b>	Industrial
<b>Tax Map ID</b>	122-00-00-027
<b>Park Status</b>	Eastport Industrial Park (Total Park Acreage: 169.40 Acres)
<b>Location</b>	3.2mi NW of US78/US17 intersec, N of US 78
<b>Landuse</b>	Undeveloped Land (N) Undeveloped Land (S) Heavy Industrial (E) Undeveloped Land (W)

**Pricing**

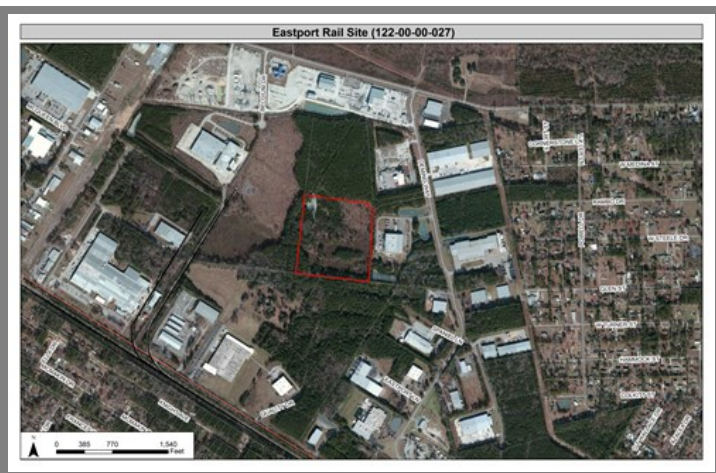
<b>Pricing</b>	For Sale
<b>Sale Price</b>	\$65,000 Per Acre

**Details**

<b>Total Available Acreage</b>	25.00
<b>Developable Acreage</b>	21.68
<b>Additional Acreage Available</b>	110.00
<b>Minimum Divisible Acreage</b>	5.00
<b>Max Contiguous Developable Site</b>	Undetermined
<b>Maximum Building Size</b>	Undetermined
<b>Site Improvements</b>	Partially Cleared
<b>Elevation Range</b>	70' to 70'
<b>Primary Soil Type</b>	Loamy Sand

**Due Diligence**

<b>Cultural Resource Identification Survey</b>	Not Completed
<b>Boundary Survey</b>	Completed
<b>Protected Species Assessment</b>	Not Completed
<b>Preliminary Geotechnical Exploration</b>	Not Completed
<b>Phase 1 EPA Site Assessment</b>	Completed
<b>Topographical Survey</b>	Not Completed
<b>Wetlands Delineation</b>	Not Completed



**Utilities**

<b>Water Provider</b>	Summerville CPW
<b>Nearest Water Line Size</b>	12 inches
<b>Distance to Nearest Water Line</b>	On-Site
<b>Wastewater Provider</b>	Dorchester County Water and Sewer
<b>Sewer Line #1 Size</b>	8" (Gravity)
<b>Distance to Sewer Line #1</b>	On-Site
<b>Sewer Line #2 Size</b>	10" (Gravity)
<b>Distance to Sewer Line #2</b>	On-Site
<b>Natural Gas Provider</b>	Dominion Energy
<b>Gas Line #1 Size</b>	4" (Distribution)
<b>Distance to Gas Line #1</b>	1,140 feet
<b>Gas Line #2 Size</b>	8" (Distribution)
<b>Distance to Gas Line #2</b>	1,363 feet
<b>Alternative Gases</b>	None Available
<b>Electric Provider</b>	Dominion Energy
<b>Telecomm Providers</b>	AT&T, Home Telecom

**Transportation**

<b>Road Serving Site</b>	Deming Way (2 Lanes)
<b>Rail Access</b>	No
<b>Runway Access</b>	No
<b>Barge Access</b>	No
<b>Nearest Commercial Airport</b>	Charleston International (17.00 Miles)
<b>Nearest Interstate</b>	I-26 (4.00 Miles)
<b>Nearest Marine Port</b>	Charleston (26.00 Miles)
<b>Nearest Inland Port</b>	Dillon Inland Port (127.00 Miles)
<b>Nearest Intermodal Yard</b>	CSX Charleston (20.00 Miles)

**Eastport Industrial Park - Tract 13**  
Dorchester County  
3.2mi NW of US78/US17 intersec, N of US 78  
Jedburg, SC 29483

