

County	Chester
Municipality	Unincorporated
Zoning	ID-1
Tax Map ID	113-00-00-017-000
Park Status	Stand Alone Site
Location	Dunlap-Roddey Road
Landuse	Light Industrial (N) Light Industrial (S) Light Industrial (E) Light Industrial (W)

Pricing

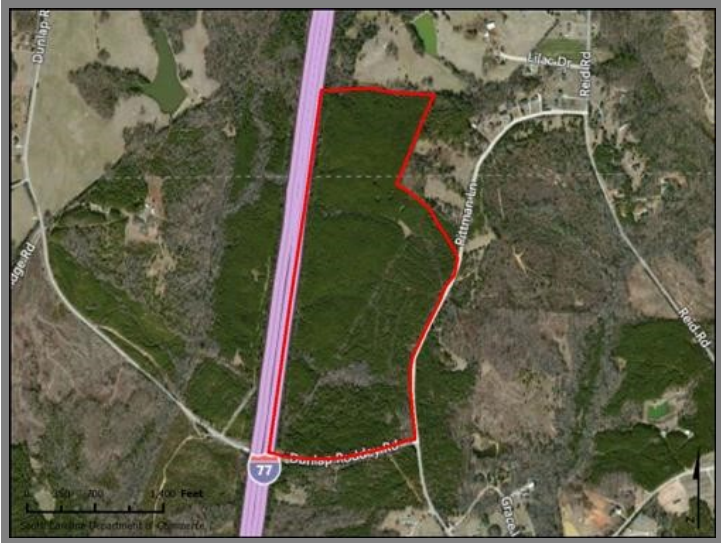
Pricing	For Sale
Sale Price	\$30,000 Per Acre

Details

Total Site Acreage	126.00
Developable Acreage	Undetermined
Additional Acreage Available	Undetermined
Minimum Divisible Acreage	Not Subdividable
Max Contiguous Developable Site	Undetermined
Maximum Building Size	Undetermined
Site Improvements	Forested
Elevation Range	522' to 589'
Primary Soil Type	Loamy Sand
Palmetto Sites Program	No

Due Diligence

Cultural Resource Identification Survey	Not Completed
Boundary Survey	Not Completed
Protected Species Assessment	Not Completed
Preliminary Geotechnical Exploration	Not Completed
Phase 1 EPA Site Assessment	Not Completed
Topographical Survey	Not Completed
Wetlands Delineation	Not Completed



Utilities

Water Provider	Chester Metropolitan District
Wastewater Provider	Chester Sewer District
Natural Gas Provider	Chester County Natural Gas
Electric Provider	Duke Energy
Telecomm Provider	Service Not Available

Transportation

Road Serving Building	Dunlap-Roddey Road (2 Lanes)
Rail Access	No
Runway Access	No
Barge Access	No
Nearest Interstate	I-77 (3.00 Miles)
Nearest Port	Charleston (176.00 Miles)
Nearest Commercial Airport	Charlotte/Douglas International (31.00 Miles)
Nearest Intermodal Facility	NS Charlotte (34.00 Miles)

John A. Black (J)
Chester County
Dunlap-Roddey Road
Richburg, SC 29712

