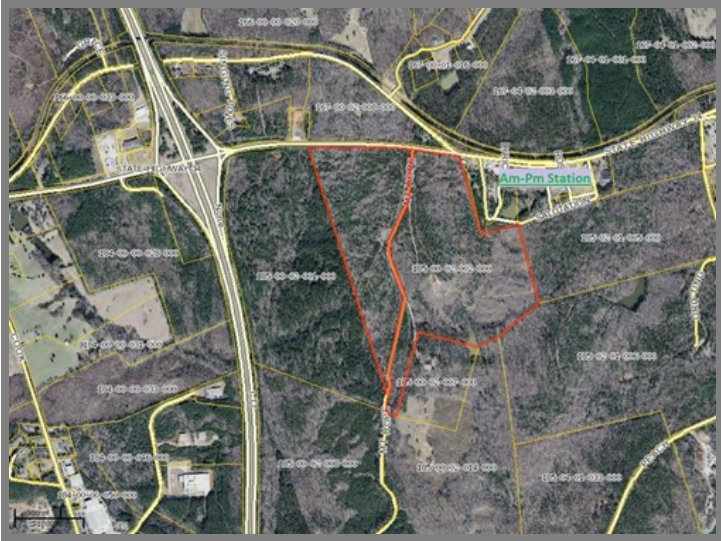


County	Fairfield
Municipality	City
Zoning	No Zoning Present
Tax Map ID	185-00-02-002-000
Park Status	Stand Alone Site
Location	Hwy 34 and Mt. Hope Rd
Landuse	Heavy Industrial (N) Forestry/Undeveloped (S) Commercial (E) Interstate (W)

Pricing	
Pricing	For Sale
Sale Price	\$8,000 Per Acre

Details	
Total Site Acreage	167.00
Developable Acreage	Undetermined
Additional Acreage Available	Undetermined
Minimum Divisible Acreage	Not Subdividable
Max Contiguous Developable Site	Undetermined
Maximum Building Size	Undetermined
Site Improvements	Forested
Elevation Range	592' to 592'
Primary Soil Type	Complex
Palmetto Sites Program	No

Due Diligence	
Cultural Resource Identification Survey	Not Completed
Boundary Survey	Not Completed
Protected Species Assessment	Not Completed
Preliminary Geotechnical Exploration	Not Completed
Phase 1 EPA Site Assessment	Not Completed
Topographical Survey	Not Completed
Wetlands Delineation	Not Completed



Utilities	
Water Provider	Town of Winnsboro
Nearest Water Line Size	8 inches
Distance to Nearest Water Line	1,000 feet
Wastewater Provider	Town of Winnsboro
Nearest Sewer Line Size	8" (Force)
Distance to Nearest Sewer Line	1,000 feet
Natural Gas Provider	Service Not Available
Electric Provider	Dominion Energy
Telecomm Provider	Frontier Communications

Transportation	
Road Serving Building	Hwy 34 and Mt Hope Rd (2 Lanes)
Rail Access	No
Runway Access	No
Barge Access	No
Nearest Interstate	I-77 (1.00 Mile)
Nearest Port	Charleston (136.00 Miles)
Nearest Commercial Airport	Columbia Metro (30.00 Miles)
Nearest Intermodal Facility	NS Charlotte (69.00 Miles)

Ridgeway Interstate Site
Fairfield County
Hwy 34 and Mt. Hope Rd
Ridgeway, SC 29130

